



MEDIA CONTACT: JANEEN ALLEN  
(Business Hours) 435-755-1850  
(After Hours) 435-770-8890

FOR IMMEDIATE RELEASE  
June 6, 2018

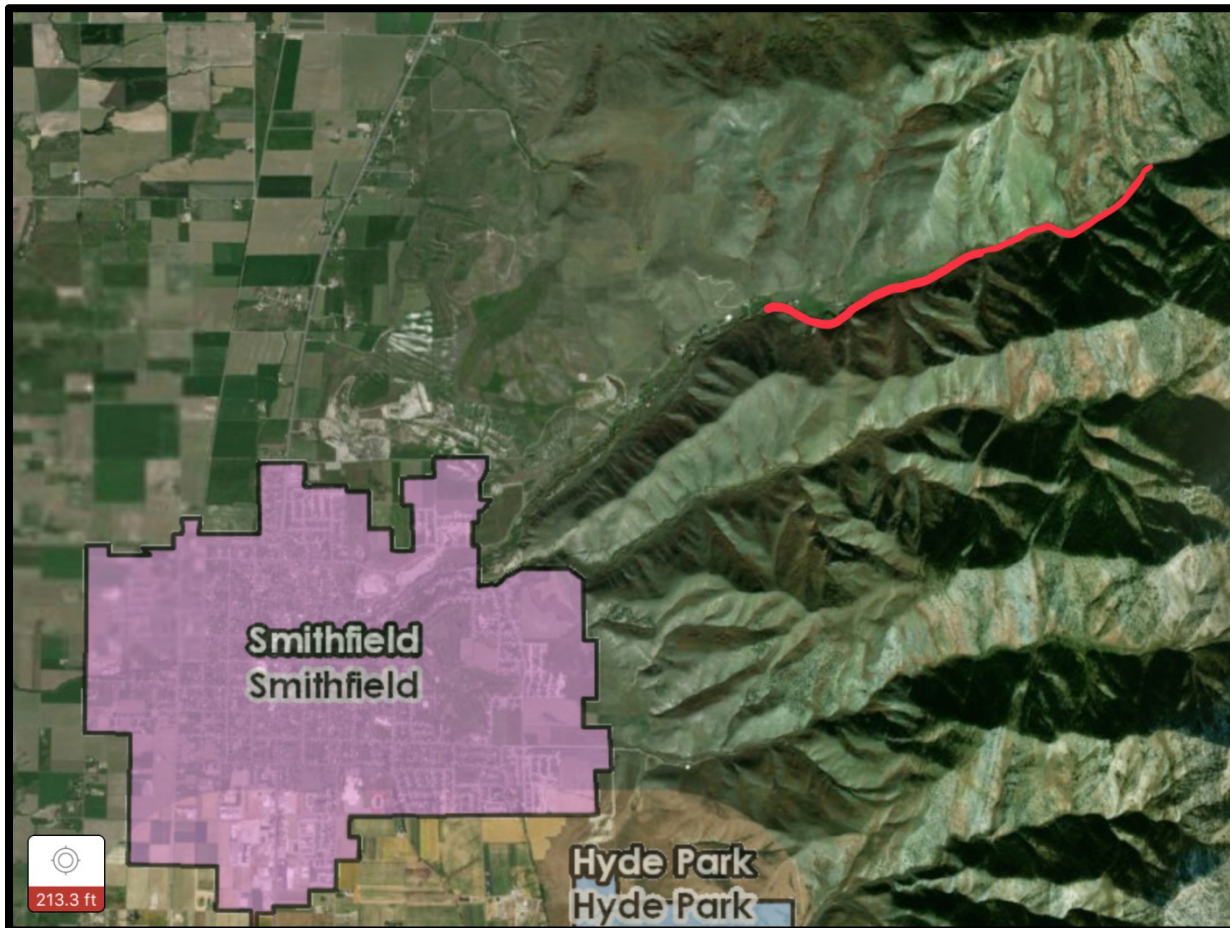
## PRESS RELEASE

### Smithfield Canyon Road Closure

The Cache County Road Department announces the complete closure of a portion of the Smithfield Canyon Road for reconstructive work to repair damage caused by last year's flooding beginning Monday, June 11th until project completion. It is anticipated to be about a month before the road will be opened.

Only the upper portion of the canyon road marked in red on the map will be closed. The lower portion will remain open during this time, but please be aware that there will be large equipment and hauler trucks on the road throughout the completion of the project. Use caution if driving on the lower portion of the road.

Please call the Cache County Road Department at 435-755-1560 if you have any questions.



###